

## Desquamative Gingivitis

A clinical condition that can indicate various autoimmune diseases

### Immco Diagnostics supports your practice and your patients

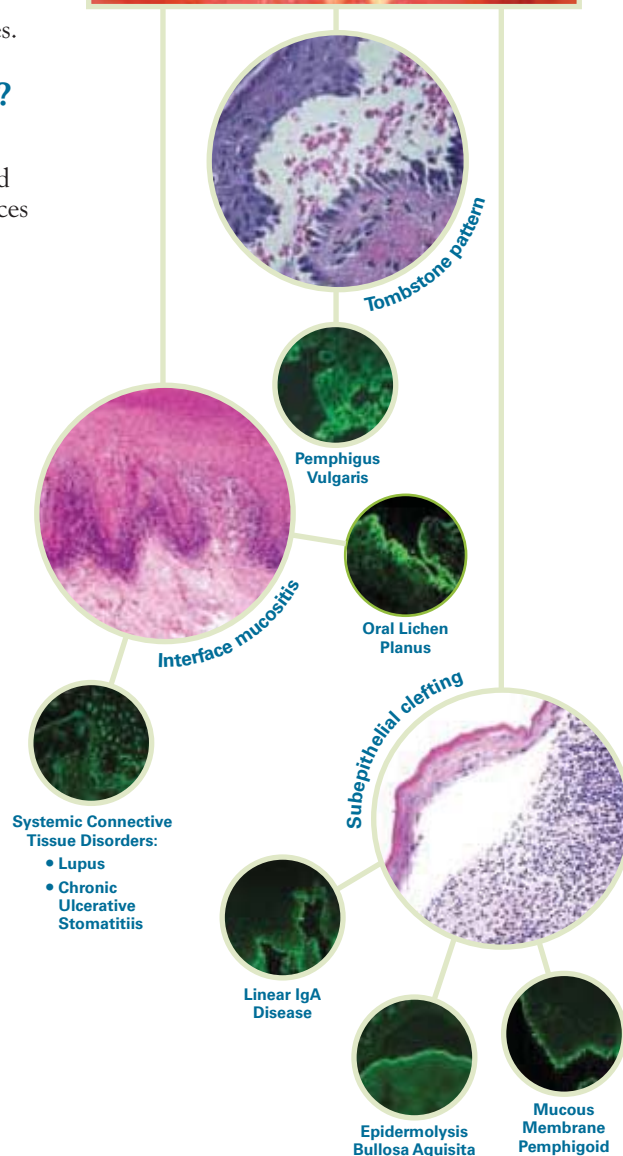
Definitive diagnosis of desquamative gingivitis is complex. Direct immunofluorescence studies of normal and lesional tissue are often essential in establishing definitive diagnosis. Treatment is monitored by presence or absence of antibodies.

### Why choose Immco Diagnostics?

- Immco was co-founded by periodontist
- Over 40 years experience providing specialized Oral and Maxillofacial pathology biopsy services
- Board certified oral and immuno pathologist
- Accuracy and reliability
- Consultations and second opinions
- More than 100 published articles on autoimmune mediated periodontal diseases
- Lab report within 48 hours of sample receipt

### Oral Pathology Tests

- 510 Direct Immunofluorescence (IgG, IgA, IgM, Fibrin, C3, C5b-9, and IgG4)
- 511 Light Microscopy (H&E)
- 512 Light Microscopic consultation
- 513 Hereditary Epidermolysis Bullosa Classification (Collagen IV, Cytokeratin, Collagen VII, laminin).





## Biopsy Site Selection

Proper biopsy sites for various tests and conditions indicated below.

### Direct Immunofluorescence

Vesiculo-bullous diseases

Pemphigus, Pemphigoid, Linear IgA Disease, Epidermolysis Bullosa Acquisita(EBA)

Tissue: oral mucosa

Site: Perilesional, erythematous adjacent to active or new blister.

### Connective tissue disorders

Lupus erythematosus, MCTD, dermatomyositis, scleroderma.

Site: Erythematous or active border of new lesion. Take biopsy for SLE from lesional and non-lesional mucosa.

### Lichen Planus and Lichnoid reactions

Tissue: oral mucosa

Site: take biopsy from a new lesion.

Histopathology (H&E)

In all cases, take biopsy from a lesional site.

## Sample Submission

Specimen collection kits are available free of charge. Please call 1.800.537.8378 or e-mail [laboratoryservices@immco.com](mailto:laboratoryservices@immco.com) for supplies.

Use appropriate tube(s) as follows:

### Immunofluorescence:

Lesional biopsy .....Red tube

Normal biopsy .....Purple tube

H&E biopsy .....Green tube

Serology.....Orange tube

Specimen can be shipped by courier services, U.S. Postal service and overnight carriers free of charge. Results are reported within two business days of the receipt of the specimen via mail, fax and through Immco online, a HIPAA-compliant web tool at [www.immco.com](http://www.immco.com).

## Selected Reference

Suresh L, Neider ME. Definitive and differential diagnosis of desquamative gingivitis through direct immunofluorescence studies. J Periodontal. 2012 Jan 20.

**For details about our products and services,  
please contact [laboratoryservices@immco.com](mailto:laboratoryservices@immco.com).**



The total solution in autoimmunity.™

### United States

Immco Diagnostics, Inc.  
10 Earhart Drive  
Suite 100  
Williamsville, NY 14221

+1.716.691.0091  
800.537.8378  
+1.716.691.6955 Fax  
[laboratoryservices@immco.com](mailto:laboratoryservices@immco.com)  
[www.immco.com](http://www.immco.com)