

Immco Diagnostics Reference Laboratory

A pioneer in autoimmune diagnostics
with over 45 years of experience

Immco Diagnostics incorporates research, development, and manufacturing of innovative diagnostics along with clinical laboratory expertise into a comprehensive solution for laboratories. We provide our clients with services in the following specialties:

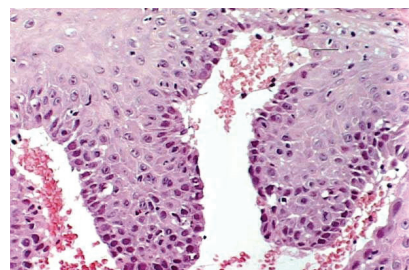
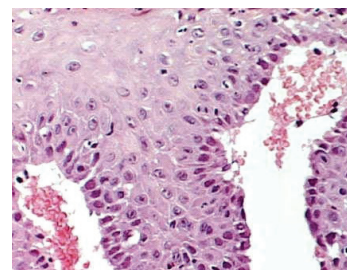
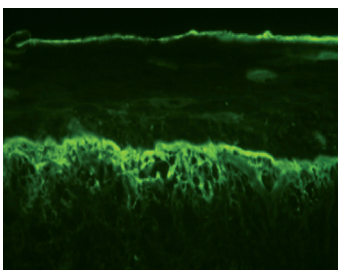
- **Immunology:** testing for an extensive list of prevalent and esoteric autoimmune diseases with over 200 cutting edge diagnostics (direct and indirect IFA, ELISA, and WB/LIA).
- **Oral Pathology:** state of the art services for tissue processing and staining, immunofluorescence and immunocytochemistry for diagnosis of odontogenic cysts and tumors, oral soft tissue tumors and malignancies and other autoimmune mediated blistering diseases.
- **Transplant Immunology:** high quality immunologic and genetic testing to ensure most favorable outcome in organ and cellular transplantation.
- **Immunogenetics:** HLA tissue typing for selected alleles to determine differential diagnosis and treatment of specific ailments.



Diagnostic Immunology

Within our immunology division, services are geared towards providing aid in diagnosis for many autoimmune diseases within the following specialties:

- **Rheumatology:** Serology and biopsy studies to aid in the diagnosis of many Collagen Vascular Diseases: Systemic Lupus erythematosus, Systemic sclerosis, Sjögren's Syndrome, Dermato/Polymyositis, Relapsing polychondritis, Rheumatoid Arthritis, and antibody detection to Extractable Nuclear and Cytoplasmic Antigen.
- **Gastroenterology, Hepatology, Allergy:** Detection of markers of autoimmune mediated diseases such as Celiac Disease, IBD, Autoimmune Hepatitis, Pernicious Anemia, and allergy testing.
- **Vasculitis, Nephrology:** Aid in diagnosis of Wegner granulomatosis, Polyarteritis nodosa, Churg-Strauss syndrome, and Antiphospholipid syndrome.
- **Neuroimmunology:** Comprehensive screening of all paraneoplastic neuronal antibodies with confirmation of the most common markers.



State of the Art Diagnostics for Sjögren's Syndrome (SS)

Novel Markers for early detection of SS

The Immco Sjögren's panel combines novel and traditional markers for early diagnosis of SS with higher sensitivity and specificity. This leads to better disease management while glands are still functional.

- Proprietary and new markers SP-1, CA-6, and PSP
- Increases sensitivity to over 90%
- Enables early diagnosis before the traditional makers SS-A (Ro)/SS-B (La) appear

Serum specimens may be submitted directly to Immco or through national reference laboratories. Dry blood spot specimens may also be submitted directly to the laboratory.

SEROLOGICAL MARKERS FOR DIAGNOSIS OF SS	
2002 American–European Consensus Group (AECG) Classification Criteria	Antibodies to SS-A (Ro) or SS-B (La) antigens, or both
2012 American College of Rheumatology (ACR) Classification Criteria	Positive SS-A (Ro) and/or SS-B (La) or positive RF and ANA titre $\geq 1:320$
2016 ACR/EULAR Sjögren's Classification Criteria	SS-A (Ro) antibody positivity
Immco Sjögren's panel/markers	Traditional markers (ANA/RF/SSA/SSB) plus Immco Sjögren's markers (SP-1/CA-6/PSP)

PREVALENCE OF AUTOANTIBODIES OVER TIME ¹		
Disease Duration	SS-A positive	SS-A negative/Immco Sjogren's markers positive
< 5 yrs	68.4%	26.4%
5-10 yrs	80%	10%
>10 yrs	90.9%	4.5%

¹ "Autoantibodies, detection methods and panels for diagnosis of Sjögren's syndrome" Shen et al Clinical Immunology, 2017 in press

Experience: The Immco team draws upon exclusive clinical and research experience frequently contributing to the scientific literature in the field of Immunology.

Accreditations: Our laboratory is CLIA, ASHI accredited and is licensed by the New York State Department of Health and by the state of California, Florida, Maryland, Pennsylvania, and Rhode Island.

Service: We are known for high quality and accurate reports, keen consultations, and excellent customer service. Clients benefit from complimentary courier/ express mail service, and access to reports within 48 hours through Immco Online – a convenient HIPPA complaint lab information system.



For more details on our services, or specimen collection kits visit our website: www.trinitybiotech.com/reference-lab-services

1.800.537.8378 | laboratoryservices@immco.com